

Violoncello

Charlie Barber



for symphony orchestra

© Charlie Barber

Instrumentation:

2 Flutes
 2 Oboes
 2 Clarinets in Bb
 2 Bassoons

2 Horns in F
 2 Trumpets in B flat
 2 Tenor Trombones
 Tuba

Timpani

2 Percussion (1: Orchestra Bass Drum, Snare Drum; 2: Cabasa, Marimba)

Harp

Violin 1
 Violin 2
 Viola
 Violoncello
 Contrabass

Strings: 'Divisi' indicates conventional outside-inside division

Score in C

Duration:

c. 3 minutes

Programme note:

Terpsichore in Sneakers takes its title from Sally Banes' influential 1987 text, which documents the emergence of post-modern dance [in the United States] and its evolution from avant-garde experimentation to hybrid, vernacular forms such as breakdancing. Like Banes' exploration of movement beyond the classical canon, this orchestral work draws inspiration from the collision of tradition and innovation.

Structured around a recurring 13-beat rhythmic cycle, the work integrates asymmetry and drive, evoking both ancient metrical practices and the kinetic energy of modern dance. The music shifts through contrasting textures and layered rhythmic patterns, echoing the playful, exploratory spirit of post-modern dance.

By foregrounding pulse, gesture, and transformation, ***Terpsichore in Sneakers*** aims to illuminate the enduring interdependence of music and movement. The work embodies a compositional inquiry central to the composer's practice: how sound might trace, provoke, or reflect the body in motion.

Charlie Barber, July 2025

Terpsichore in Sneakers

for symphony orchestra

Allegro energico

Charlie Barber

♩ = 136



11

ben marc.

20

A



28

pizz.

37

*div.**arco*

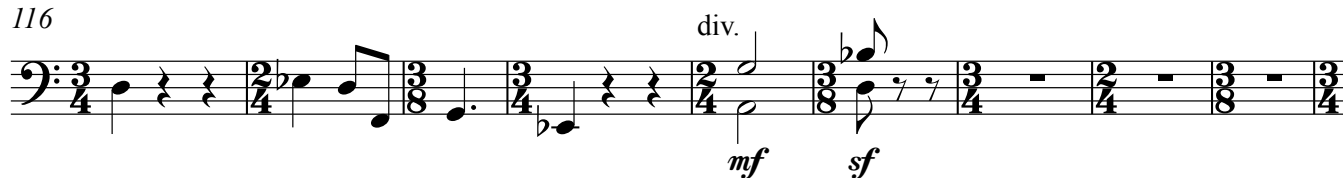
43

B



99 *ben marc.*106 **E**

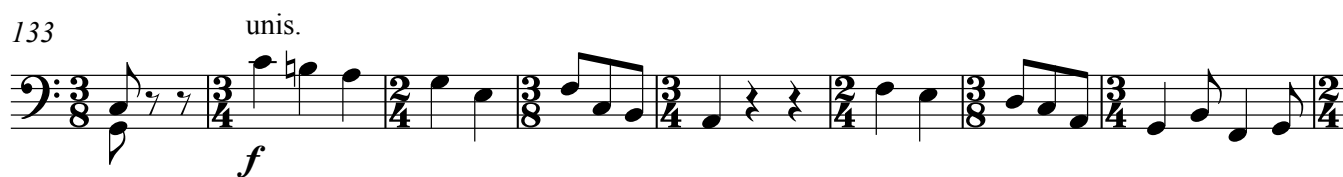
116



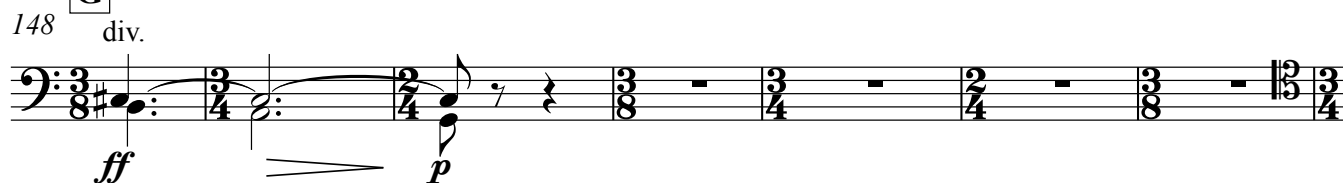
125



133



141

148 **G**

Charlie Barber - Terpsichore in Sneakers

155 unis.

f

This musical staff contains measures 155 through 160. It begins with a treble clef, a key signature of one sharp (F#), and a 3/4 time signature. The first measure (155) starts with a forte (*f*) dynamic. The notation includes eighth and quarter notes, with some measures containing accidentals (sharps and naturals). The time signature changes to 2/4 in measure 156, 3/8 in measure 157, 3/4 in measure 158, 2/4 in measure 159, and 3/8 in measure 160.

161

ff

This musical staff contains measures 161 through 164. It continues with the same treble clef and key signature. Measure 161 starts with a fortissimo (*ff*) dynamic. The notation features eighth and quarter notes. The time signature changes to 2/4 in measure 162, 3/8 in measure 163, 3/4 in measure 164, and 2/4 in measure 165.

165

This musical staff contains measures 165 through 169. All measures in this section consist of whole rests, indicating that the cello is silent for this duration. The time signature changes to 3/8 in measure 165, 3/4 in measure 166, 2/4 in measure 167, 2/4 in measure 168, and 3/8 in measure 169.

170

ff

This musical staff contains measures 170 through 174. It begins with a bass clef and a fortissimo (*ff*) dynamic. The notation includes eighth and quarter notes, with some measures containing accidentals (flats and naturals). The time signature changes to 2/4 in measure 170, 3/8 in measure 171, 2/4 in measure 172, 3/4 in measure 173, 2/4 in measure 174, and 3/8 in measure 175.